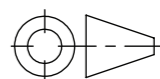


Referans (Reference)	Ölçüler (Dimensions)
La	192 mm
Lb	154 mm
Lc	40 mm
Ld	73 mm
A	(9+2.30*N) mm

N:Plaka Sayısı (Number Of Plates)

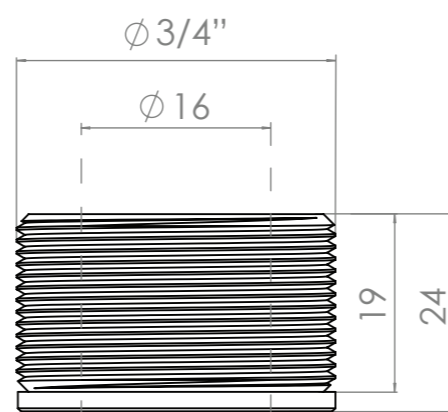
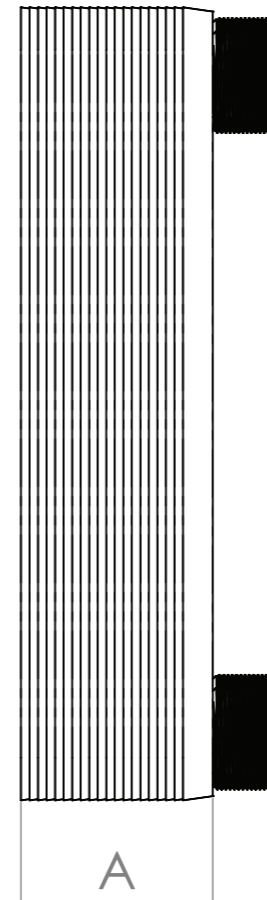
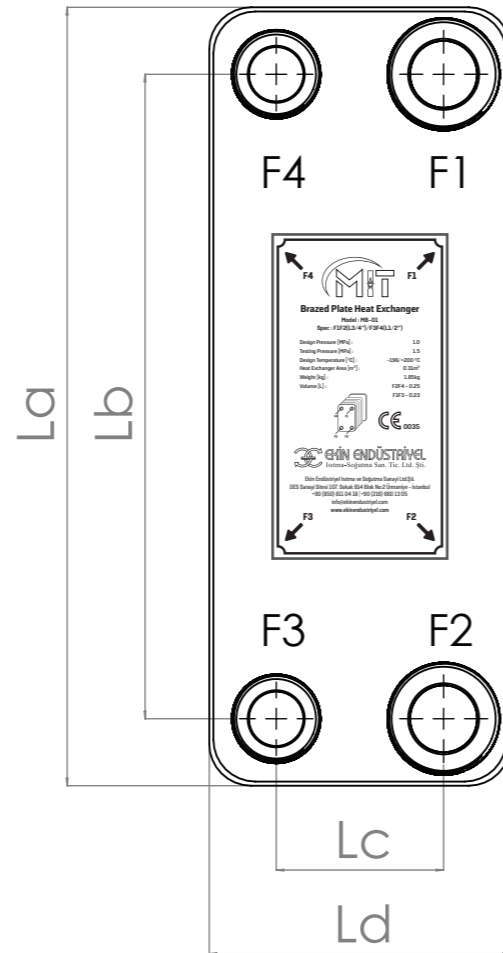
Ağırlık (Weight)	(0,40+0,044*N) kg
Test (Test)	He
Dizayn Basıncı (Design Pressure)	3.0 MPa
Test Basıncı (Test Pressure)	4.5 MPa
Maksimum Plaka Sayısı (Max. Plate Number)	150
Akış Plakaları (Flow Plates)	AISI 316
Destek Plakaları (Cover Plates)	AISI 304
Bağlantı Ağızı (Connection Port)	AISI 304
Lehim (Solder)	%99,9 Bakır (Copper)

Revision 2		
Revision 1		
Designed By	İsmail Mert Genç	25.07.18
Approved By	Gökhan İncirli	25.07.18
Dimensions without tolerance ISO 2768-m	ISO projektion 	Operating Temperature -196 °C/200 °C

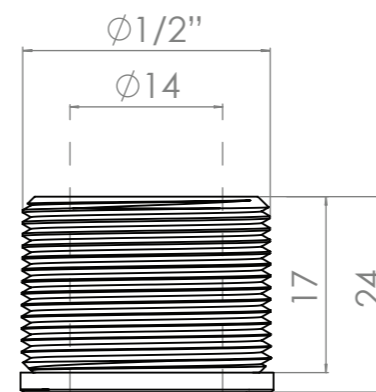
Part Name: **MB-01**

 **EKIN ENDÜSTRİYEL**

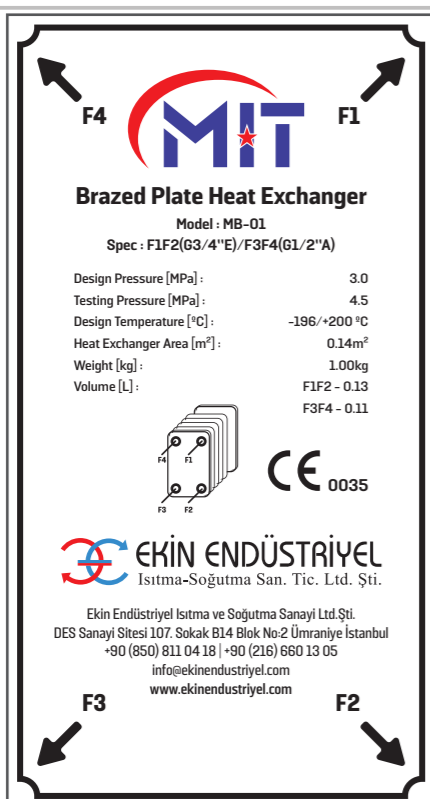
A3
SHEET 1/1
SCALE 1:50



F1 F2
ISO228/1-R 3/4



F3 F4
ISO228/1-R 1/2



* Ekin Endüstriyel önceden haber vermesizin model, renk, ekipman, aksesuarlar ve resimler üzerinde değişiklik yapma hakkını saklı tutar.
* Ekin Industrial reserves the right to make changes to models, colors, equipment, accessories and pictures without prior notice.